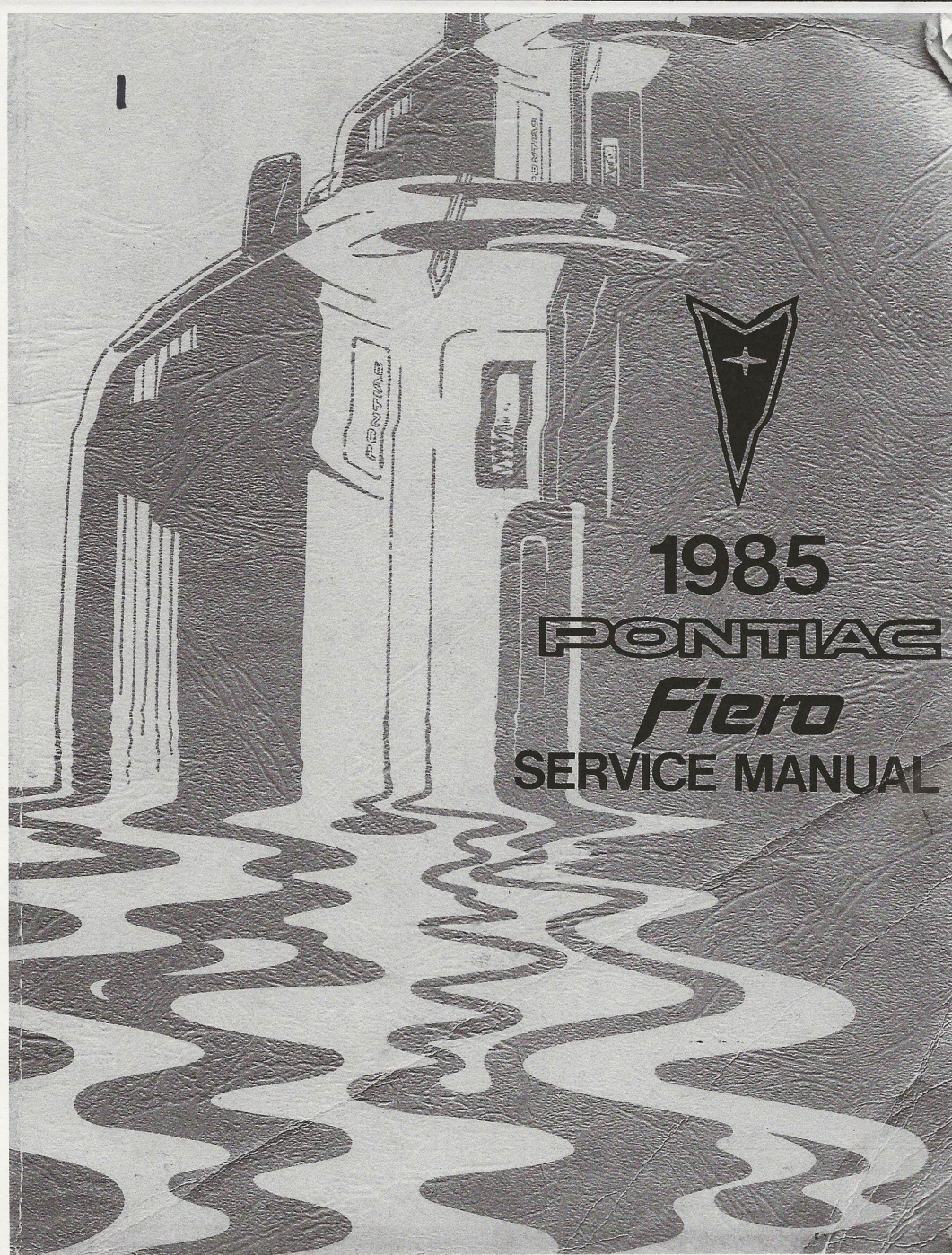


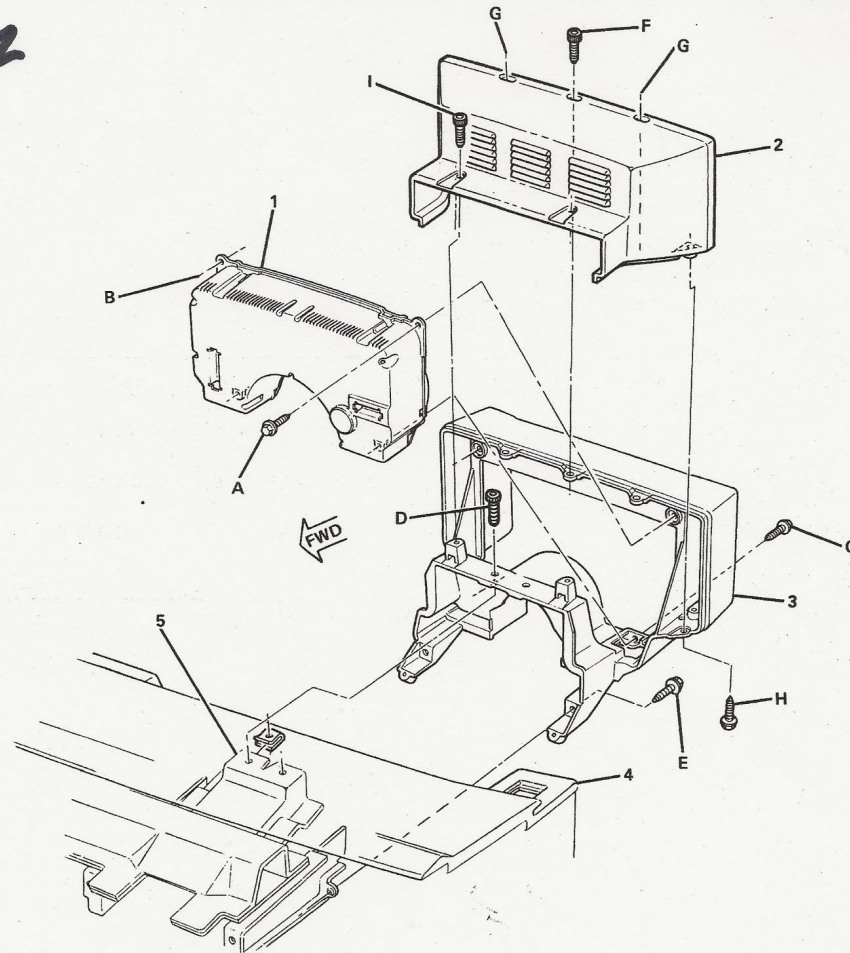
# LED Interior Lighting

Mark Soeldner



**1985**  
**PONTIAC**  
***Fiero***  
**SERVICE MANUAL**

2



- 1 — CLUSTER ASM.
  - 2 — REAR CLUSTER COVER
  - 3 — CLUSTER HOUSING ASM.
  - 4 — I/P
  - 5 — STEERING COL. SUPT.
- A — INSTALL THIS BOLT/SCREW FIRST
  - B — INSTALL THIS BOLT/SCREW SECOND

- C — INSTALL THIS BOLT/SCREWS THIRD
- D — INSTALL THIS BOLT/SCREWS FOURTH
- E — INSTALL THIS BOLT/SCREW FIFTH
- F — INSTALL THIS BOLT/SCREW SIXTH
- G — INSTALL THIS BOLT/SCREWS SEVENTH
- H — INSTALL THIS BOLT/SCREWS EIGHTH
- I — INSTALL THESE BOLT/SCREWS LAST

420007-8C-P

Fig. 8C-12 I/P Cluster and Housing Assembly



- New Parts & Specials
- Accessories
- Apparel & Novelty
- Brakes
- Cables
- Cleaners & Polish
- Clutches
- Common Parts
- Cooling & A/C
- Drive Train
- Electrical
- Engine 4cyl
- Engine V6
- Exhaust
- Exterior
- Fuel & Filters
- Ignition
- Interior
- Lamps & Lenses
- Literature
- Locks
- Moldings
- Mounts 4cyl
- Mounts V6
- Performance
- Restoration Parts
- Steering
- Suspension
- Switches
- Tools
- Used Parts
- Weatherstrips

3

[Browse Tech Tips](#) > Dash Cluster Bulb Replacement & Removal

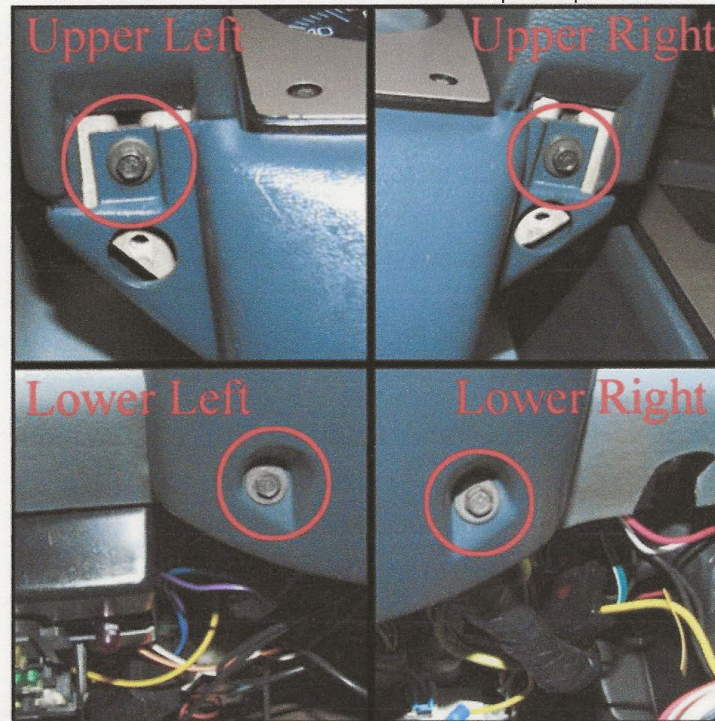
### Dash Cluster Bulb Replacement & Removal

The following article will show the steps on how to access the back of the speedo cluster in order to replace the light bulbs. It also highlights the steps required to remove the entire cluster.

#### Tools required

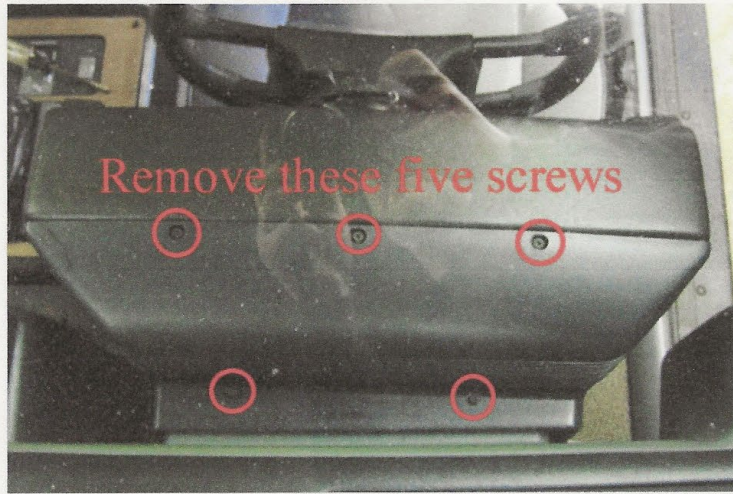
- Ratchet
- 7mm Socket
- 10mm Socket
- T15 torx driver/socket

1. Remove the four 7mm screws that hold the lower dash panel in place.

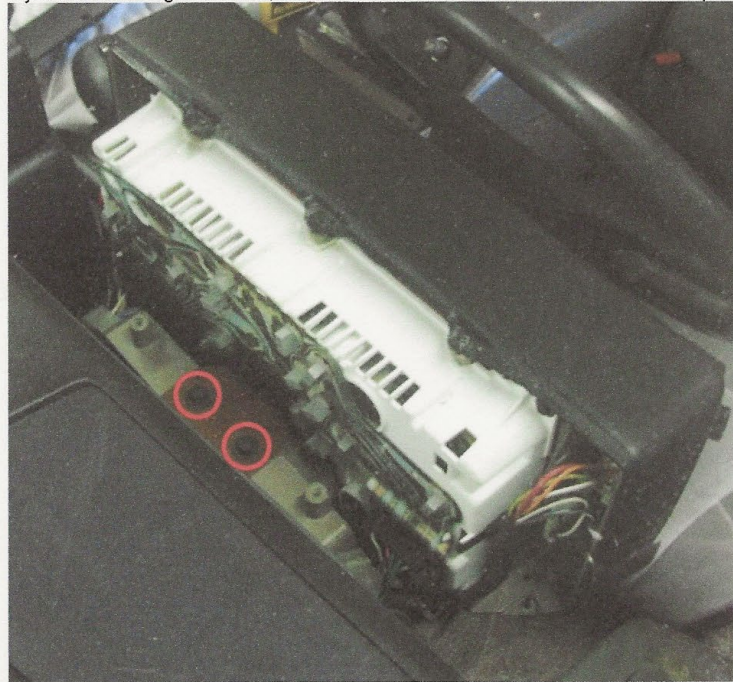


2. Remove the five torx head screws that hold the speedo pod cover in place.

4

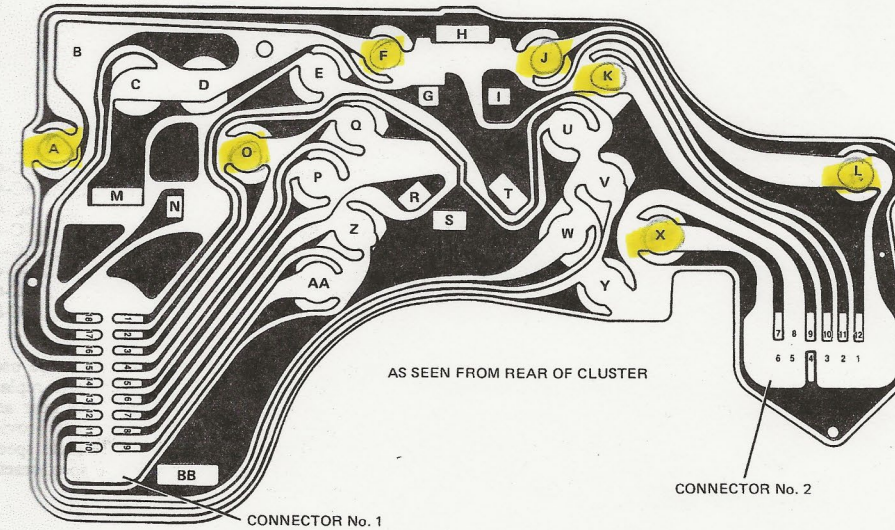


3. With the upper cover removed, you now have access to all of the dash light sockets. Simply turn them counter clockwise and pull them out to check or change a bulb.  
If you are removing the cluster, then remove the two 10mm screws shown in the photo.



4. Remove the four torx head screws that hold the speedo fascia in place.

5



- CONNECTOR No. 1
- 1 UP SHIFT
  - 2 LEFT TURN SIGNAL
  - 3 ILLUMINATION
  - 4 RIGHT TURN SIGNAL
  - 5 IGNITION
  - 6 OIL
  - 7 FUEL SENDER
  - 8 FASTEN BELTS
  - 9 IGNITION
  - 10 CHECK ENGINE
  - 11 GROUND
  - 12 HI-BEAM
  - 13 DOOR AJAR
  - 14 BRAKE
  - 15 ILLUMINATION
  - 16 SPARE
  - 17 SPARE
  - 18 TACH COIL

- CONNECTOR No. 2
- 1 OPEN
  - 2 OPEN

- CONNECTOR No. 2 (Cont'd.)
- 3 OPEN
  - 4 GROUND
  - 5 OPEN
  - 6 OPEN
  - 7 ILLUMINATION
  - 8 OPEN
  - 9 IGNITION
  - 10 REAR DECK AJAR
  - 11 TEMP SENDER
  - 12 ILLUMINATION

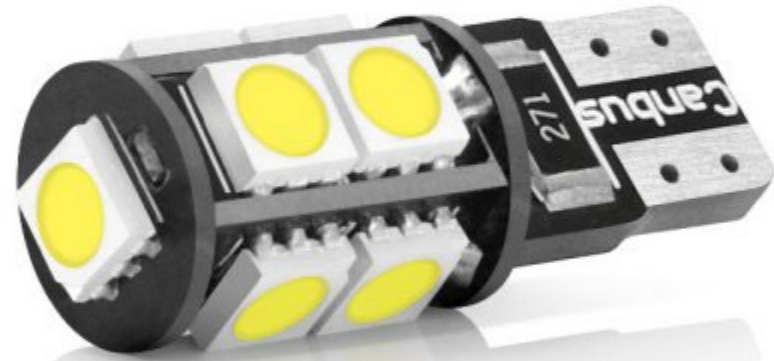
- + A TACH ILLUMINATION
- B OPEN
- C SPARE
- D SPARE
- E UP SHIFT
- + F TEMP GAGE ILLUMINATION
- G TEMP GAGE IGNITION

- H TEMP GAGE GROUND
- I TEMP GAGE SENDER
- + J TEMP GAGE ILLUMINATION
- + K ODOMETER ILLUMINATION
- + L SPEED-O ILLUMINATION
- M TACH IGNITION
- N TACH COIL
- + O TACH GAGE ILLUMINATION
- P LOW OIL T.T.
- Q RIGHT TURN SIGNAL
- R FUEL GAGE SENDER
- S FUEL GAGE GROUND
- T FUEL GAGE IGNITION
- U LEFT TURN SIGNAL T.T.
- V DOOR AJAR T.T.
- W HI-BEAM T.T.
- + X SPEEDO ILLUMINATION
- Y BRAKE T.T.
- Z FASTEN BELTS T.T.
- AA CHECK ENGINE
- BB VOLTAGE GAGE GROUND

Fig. 8C-1 Printed Circuit

420025

+ = LED bulbs installed 6/20/13



7

### BUY ME A BEER! :-)

[Click here to visit the donation page](#) | [View all sponsors](#)

[Email This Page to Someone!](#) | [Printable Version](#)

Like 0 Share

194/T10



[next newest topic](#) | [next oldest topic](#)

#### ledequipped.com Custom Led Lights

**Fiero LED Light Bulbs** by copperhens  
 Started on : 11-05-2019 09:44 PM  
 Replies : 6 (627 views)  
 Last post by: copperhens on 11-09-2019 01:08 PM

**copperhens** Member [REPORT THIS POST](#) 11-05-2019 09:44 PM



Posts: 370  
From: Michigan  
Registered: Oct 2015  
Feedback score: N/A  
[Leave feedback](#)  
[Rate this member](#)

Each Fiero has a different number of bulbs. So there are a variety of kits, so make sure you choose the correct one. These are all plug and play, besides a couple of exceptions that will be noted. Bulbs also just come in white, unless it is an added option. This list can be updated to include more options.  
Possible color options: white, orange, red, blue, green, purple.

For placing orders. Contact me at one of the options below with what you are interested in. After I verify I have it in stock and ready to ship, you can send a payment. I typically use Paypal.  
Contact me through email preferably at gt1987fiero@gmail. Could use Pennocks PM(I may not see right away).  
Ships in 2-3 days depending on availability.

#### Fiero Interior Light Kits:

Gauge Cluster(does not include warning lights):  
\$15 includes bulbs for voltage and oil pressure. Some clusters have one less bulb, so some of you may end up with an extra bulb. Change color to orange or red +\$10

Foam Backing for Gauge Cluster:  
Most Fieros have flaking foam in the back of the gauge cluster, and some don't have in completely. Without it, you can experience light bleed with the LEDs(or even stock bulbs). This foam is cut out for the Fieros with an adhesive on that back that makes installation easy.  
\$15

Flood Lights:  
\$4 Change to orange or red +\$3

Dome Lights:  
\$20

Ash Trays:  
\$6 Change to orange or red +\$2

Automatic Gear Indicator:  
\$3 Change to orange or red +\$1

Cigarette Lighter:  
\$3 Change to orange or red +\$1

Heater Control:  
\$3 Change to orange or red +\$1

Trunk Light:  
\$4

Front Trunk Light:  
\$2

Trunk Popper:  
\$3  
\*\*\*\* Not plug and play! Bulb is soldered into the switch and you will have to play around to get it out, as well as putting it back in.

Rear Defrost:  
\$3  
\*\*\*\* Not plug and play! Bulb is soldered into the switch and you will have to play around to get it out, as well as putting it back in.

#### Exterior Kits:

PONTIAC on GT models:  
\$8

Side Markers: