

Fiero Stereo Systems



Northern Illinois Fiero Enthusiasts

16 March 2002

GM Head Units

For the stock look.



Aftermarket Units and Adapters

DIN size Radio's



Aftermarket Double DIN Pioneer Models



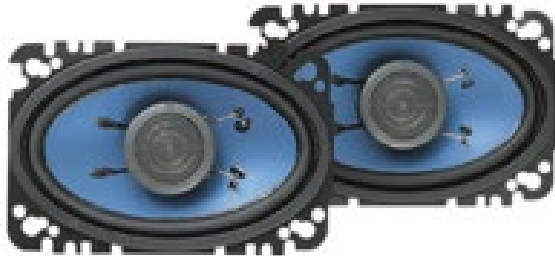
Factory Speaker Upgrades



- Dash 4X10
(Soon to be unavailable)



- 84/85 Seats 3.5”
(2 pairs required)



- 86-88 Sail Panels 4X6

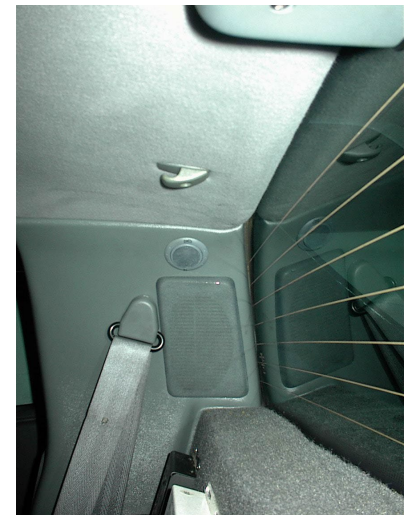


- Optional 4X6 Plates

Dash Speaker Options



Sail Panel and Rear Deck Options



Fiero Door Mounted Speakers

For use on door with power windows and no map pockets.



Subwoofers

- Factory Replacement
- Under Dash Style
- Console Style
- Footwell Style
- Behind Seats
- Front Trunk Mounted

Subwoofers

Factory Performance Sound

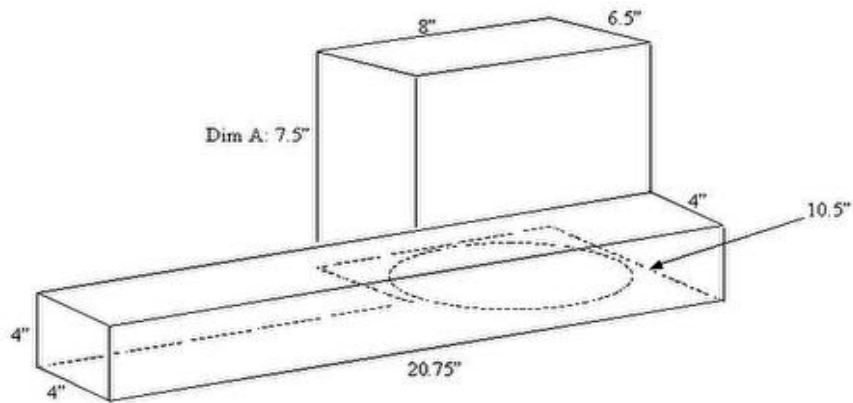
Rodney Dickman's Factory Sub
Replacement Speaker.

1986 thru 1988 "Performance
Sound" Option.



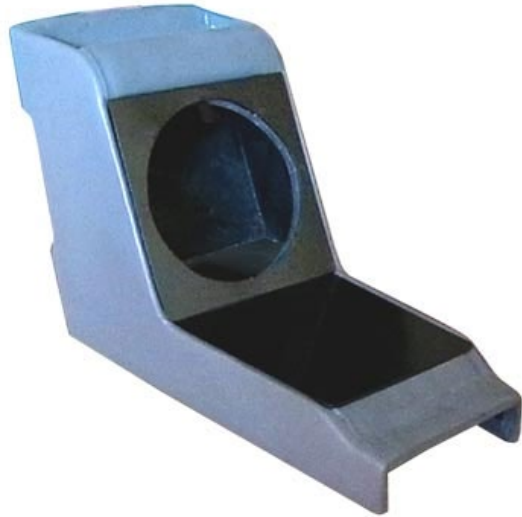
Custom Subwoofers

Under Dash Subwoofers 6.5" and 8".



Custom Subwoofers

Center Console Subwoofers 8" and 10"



Custom Subwoofers

Footwell Subwoofers 8" and 10"

Free image hosting by www.PhotoPoint.com



Custom Subwoofers

Behind the Seats 6" and 8" "Easy Fit.

Q-Logic 8"

Requires
Amp.



Bazooka Tube 6.5"

Powered Sub.



Kenwood 6.5"

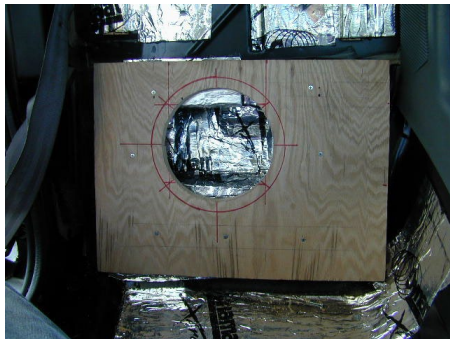
KSC-WA62RC

Powered Sub.



Custom Subwoofers

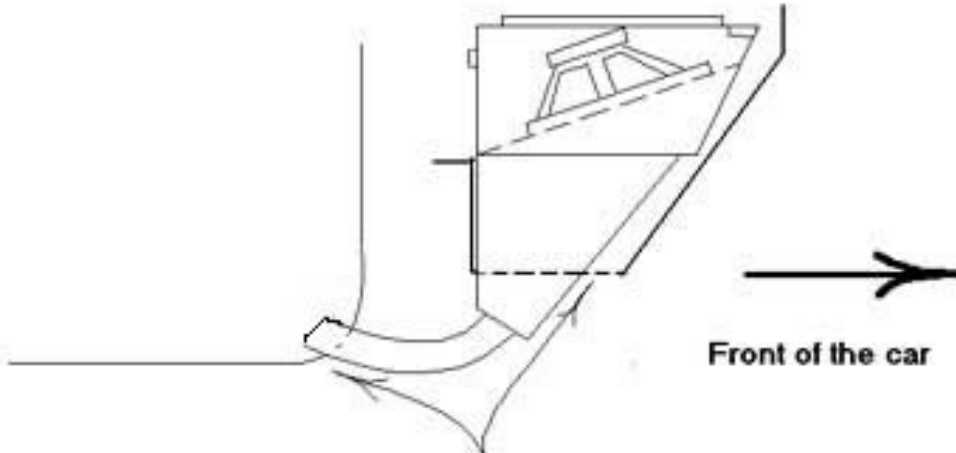
Behind the Seats 8", 10", And 12"



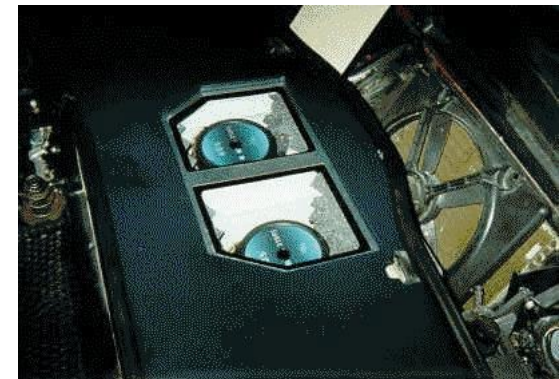
Custom Subwoofers

Front Trunk 10" And 12"

Fiero Sub Box outline veiw.

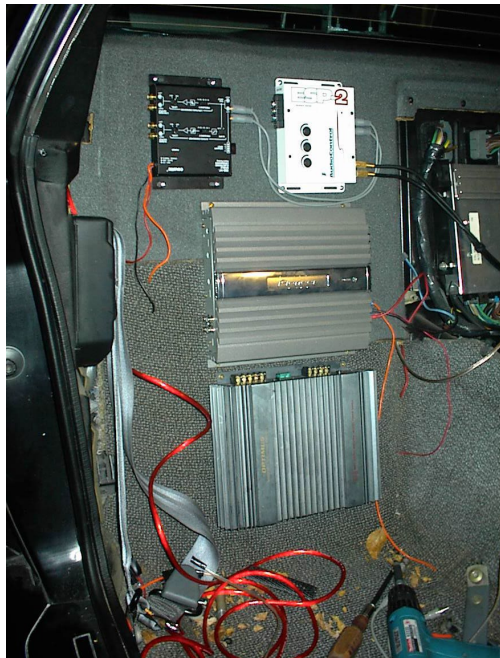
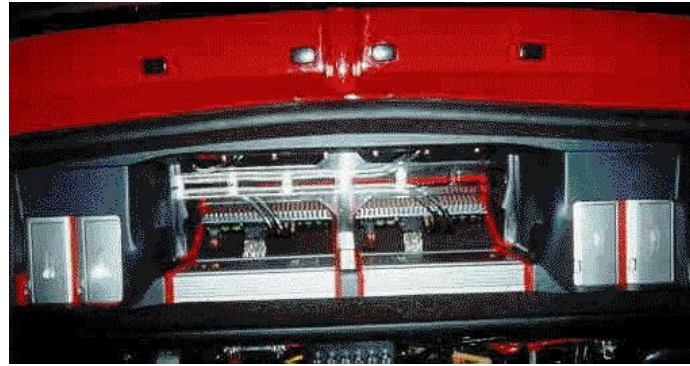


The only 2 cuts to have to make.
One 4" hole in the floor board, and
the bottom of the spare tire tub.



Amplifiers and Crossovers

Free image hosting courtesy of www.photopoint.com



Add-On Electronics

CD Changers, Digital Processors, and EQ's



Thanks

- A Special Thanks to the Pennock's Fiero Forum Members for use of pictures and idea's.