

# BTR'S STEALTH WING STANDS

A FIERO MICRO PROJECT PRESENTATION



CHRIS WITH HIS NEW  
STEALTH WING STANDS  
THAT HE BROUGHT TO THE  
35<sup>TH</sup> ANNIVERSARY SHOW.  
ONLY 10 SETS AVAILABLE.

---

THESE STANDS WERE PRODUCED WITH A  
NEW RESIN MATERIAL WITH THREADED  
SLEEVES MOLDED INTO THE WINGS SO THEY  
WOULD NOT SNAP, STRIP OR LOOSEN

# AFTER I HAD THE STEALTH WING STANDS THE NEXT PART WAS TO FIND A “FIERO” WING TO REPLACE MY STAND MOLDED JC WHITNEY ONE

---

WITH THE HELP OF BILL KLICHER WHO HAD JUST REPLACED THIS WING.

I PURCHASED THE WING FROM BILL WITH A FEW MINOR ISSUES. ALL THE STUDS WERE MISSING AND ROLLING AROUND IN THE WING!

SO THE FIRST STEP WAS TO PREP IT AND PAINT IT JET BLACK, ALONG WITH THE STANDS.

I WOULD WORRY ABOUT THE STUDS LATER.





THE NEXT STEP  
WAS TO LOOK AT  
THE MOUNTING  
PATTERN FOR THE  
STANDS. WITH  
SOME HELP OF  
ROB BARTLETT  
FROM MN TO  
COMPARE

---

MIDDLE – CURRENT STAND

SILVER STEALTH FIRST RUN

WHITE STEALTH SECOND AND  
LAST EVER RUN

AS YOU CAN SEE THE PATTERNS  
ARE ALL DIFFERENT SO NOW  
COMES THE TEST FIT



AFTER THE WING WAS COMPLETED FROM PAINTING IT WAS TIME TO EPOXY THE NEW SLEEVES – NOT STUDS INTO THE WING STANDS.

---

I WENT WITH SLEEVES VS STUDS BECAUSE I COULD CONTROL THE TENSION AND EASY REMOVAL IF NEEDED.

AFTER THE SLEEVES WERE SET I ATTACHED THE STANDS TO CONFIRM THAT THEY SAT GOOD AND DID NOT WOBBLE

THEY DO HAVE A LEFT/RIGHT MARKING





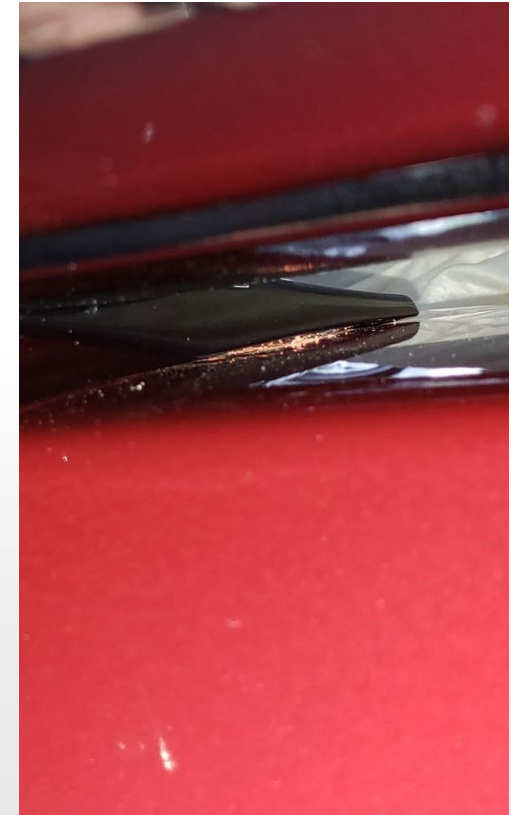
TEST FITTING TO SEE HOW  
IT SITS AND WHERE THE  
BOLTS REALLY LINE UP

---

CURRENT PATTERN ON THE  
STANDS LINES UP PERFECT  
WITH THE STOCK HOLES ON  
THE DECK LID.

BUT IT DOES NOT SIT PERFECT  
ON THE LID....SO WHAT IS  
NEXT

FIGURING OUT THE ISSUES  
THAT WERE NOT MINOR





## ISSUE #1 THE STANDS SIT VERY LOW – TOO LOW

---

I COULD NOT CLOSE THE DECK LID AS THE FINS OF THE WING WERE HITTING THE REAR FENDERS OF THE CAR AND IF I HAD FORCED IT THE WING WOULD HAVE SHATTERED.

SO WHAT TO DO.....LET'S THINK ABOUT RISERS!

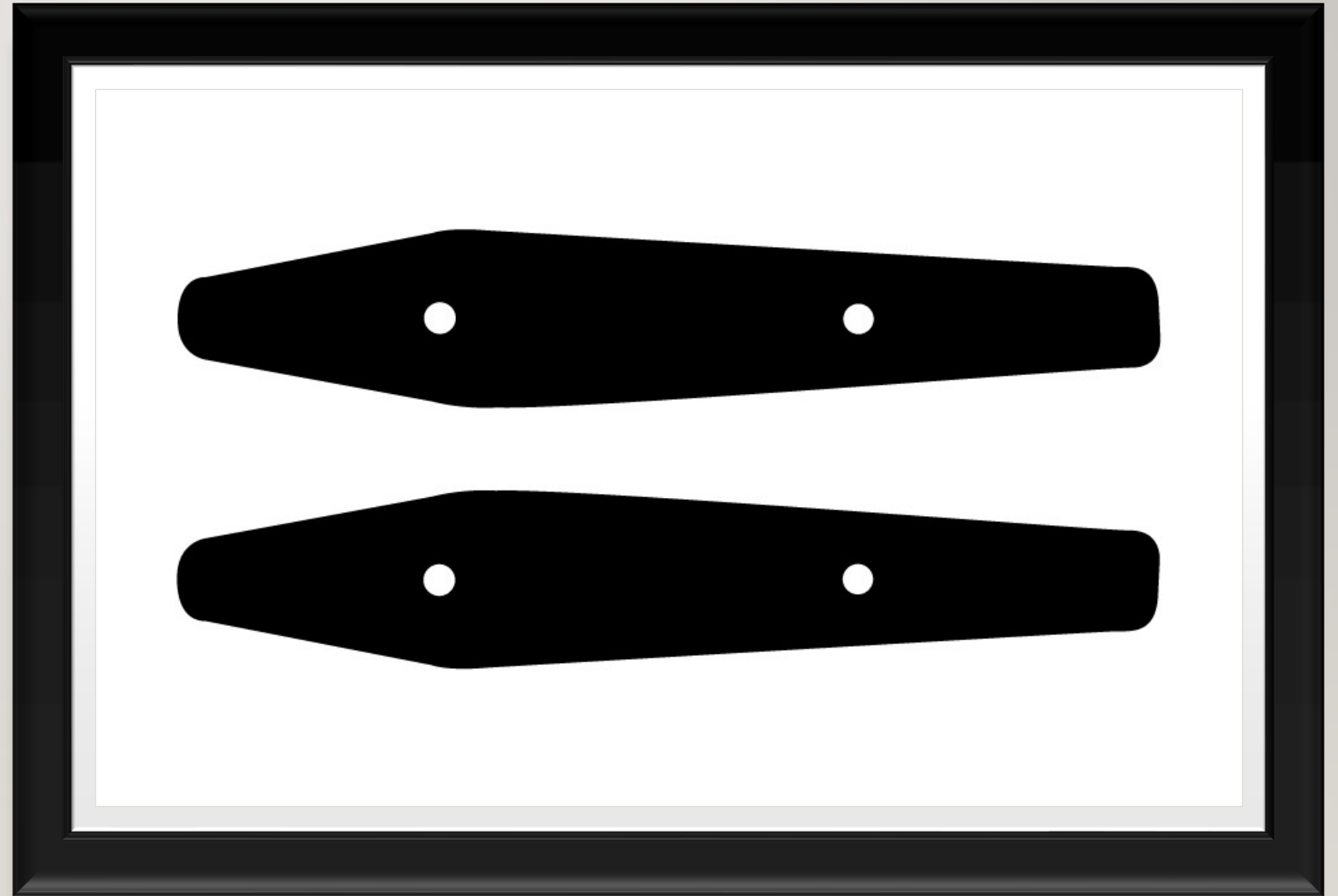
# DRAWING THE STANDS AND HOLES FOR MOUNTING

---

I HAD TO TRACE EACH STAND BECAUSE THEY WERE LABELED RIGHT AND LEFT.

AS YOU CAN SEE THEY ARE SLIGHTLY DIFFERENT ON THE ANGLES.

NOW THAT THE FILE IS SET – TIME TO CUT!







## ISSUE #2 WHAT MATERIAL TO USE? FOR MY PLATFORM SHOES

---

PVC – TO FORMING AND WILL FLEX IN  
HEAT AND BREAK IN COLD

ACRYLIC – YES! 3/8” CLEAR ACRYLIC  
DID THE TRICK AND PAINTED THEM  
BOTH JET BLACK



## TEST FIT #2

---

WITH THE RISERS IN PLACE AND THE LONGER 1.5" THREADED BOLTS THE WING WAS ATTACHED AND SITTING NICELY.



## TEST FIT #2

---

NOW THERE IS A PERFECT  
.375" GAP SEPARATING THE  
FENDER AND THE WING  
TIPS.





## TEST FIT #2

---

ANOTHER VIEW OF THE SPACING OF THE .375" GAP SEPARATING THE FENDER AND THE WING TIPS.





## FINISHING TOUCHES

---

AFTER THE WING WAS ON AND LOOKING AT IT FOR ME IT WAS MISSING SOMETHING. SOME ACCENTS...I ADDED SOME GLOSS BLACK VINYL TO GIVE IT A SHARPER LOOK THAT WRAPPED DOWN THE BACK TO ALSO ACCENT THE SHADOWING.



**JOB COMPLETED!**

---





**WHAT A  
PROFILE!**

---



**BEFORE AND AFTER**

---



# THANK YOU

DO YOU HAVE ANY QUESTIONS ON MY MICRO PROJECT PRESENTATION!